



Get Motivated
to Increase
Family
Involvement



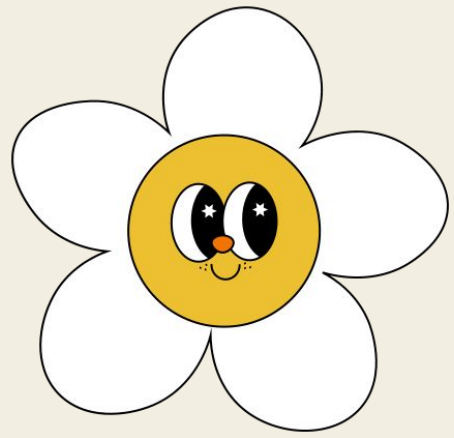
Angie Warner

Background

Wife, mom, “gamaw”

- 26 plus years PTA experience from serving at the local unit level, on the Independence Council PTA and on the Missouri PTA Board of Managers.
- Current PTA President at Procter Elementary
- Treasurer for ICPTA
- Secretary for Missouri PTA Board of Managers

- In my 26th year working as a Recovery Room Interventionist in the Independence School District.

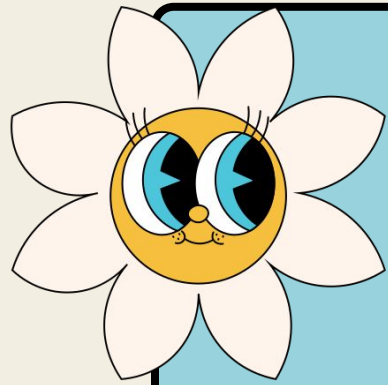


Family Involvement

WHY IS IT

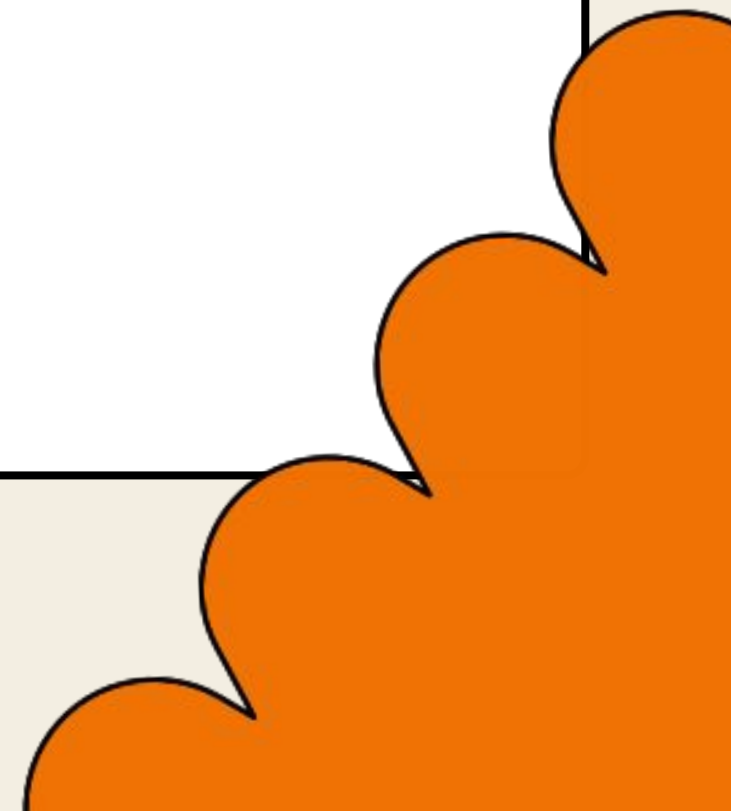
It Benefits **IMPORTANT?**

- Children whose families are engaged in their education are more likely to:
 - earn higher grades and score higher on tests;
 - graduate from high school and college;
 - develop self-confidence and motivation in the classroom;
 - and
 - have better social skills and classroom behavior.



Why is it difficult to involve families?

- Parents have different priorities
- Working parents
- Single parent home
- More grandparents raising kids, stretched too thin
- Language & cultural barrier
- Poverty, lack of transportation



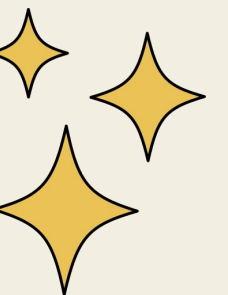
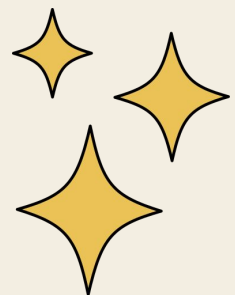
Difference Between Family Involvement & Family Engagement

Involvement is the first step towards **engagement**. It includes participation in school events or activities, with teachers providing learning resources and information about their student's grades. With **involvement**, teachers hold the primary responsibility to set educational goals.

With **engagement**, home and school come together as a team. Schools empower families by providing them with ways to actively participate, promoting them as important voices in the school and removing barriers to engagement. Some examples include encouraging families to join the PTA or arranging virtual family-teacher meetings for families with transportation issues.

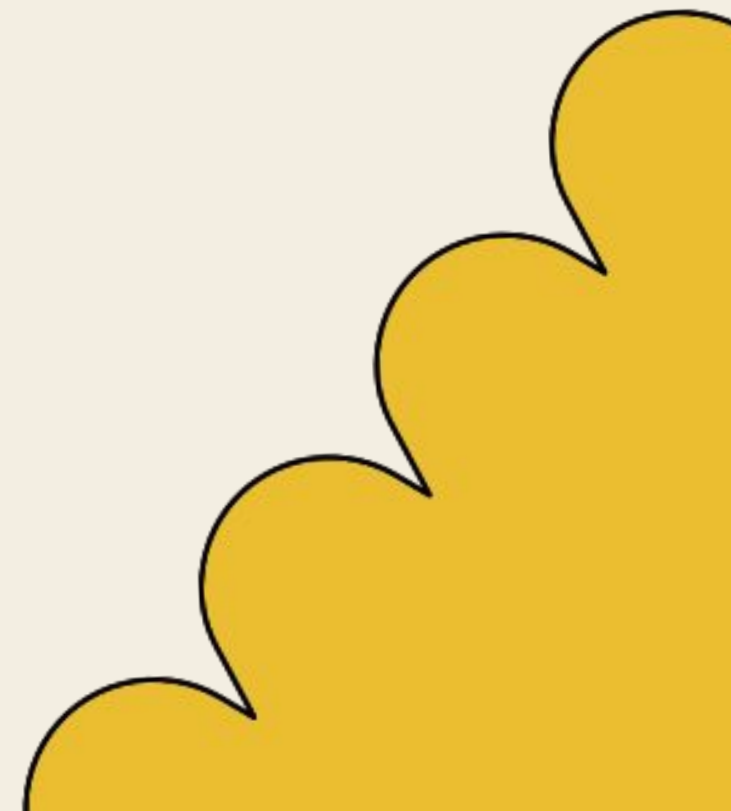


Identifying the Types of Parents Within Your School



Simple Strategies

LeaderinMe®



Ladder of Parent Engagement



LEADING

These are parents who work to support other children in the school, as well as their own child. They sit on committees and lead school efforts for the greater good.

FULLY ENGAGED

These are parents who understand they play a significant role as a member of the Learning Team. They recognize the professional expertise of the teacher and collaborate effectively to support their child's growth.

PRESENT

These are parents who attend most events, conferences and meetings, and communicate with the teacher. They are willing, but do not fully understand what they can do to optimize their child's growth.

EMERGING

These are parents who show up occasionally. They may not have the skills or comfort level to become more involved.

NOT ENGAGED

These are parents who are not known by the teacher. Teachers can only make assumptions about why they are not involved.

Inclusive Family Engagement

What does this mean?

Inclusive Family Engagement

We have an opportunity and a responsibility to ensure that all of our invitations and interactions with families are equitable, inclusive, and honor diverse identities and cultures. Try these strategies for inclusive family engagement.



How Do We Engage Our Families?

PTA's National Standards for Family-School Partnerships set the bar for how schools and parent organizations work together to support student success.

- Standard 1: Welcome All Families
- Standard 2: Communicate Effectively
- Standard 3: Support Student Success
- Standard 4: Speak Up for Every Child
- Standard 5: Share Power
- Standard 6: Collaborate with Community

Family Engagement Ideas

- **Focus on Parent Talents & Strengths**
- **Celebrate & Recognize Family Partnerships**
- **Family Events Involving Student Performances**
(Music performances, Leadership Nights, etc...)
- **Food is a MUST if at all possible,**
(If you feed them, they will come)
- **Parent/Child Events**
Kickball Games, Paint Nights, BINGO for Books, etc....

What Are Some Things That Have Worked For Your School or PTA?

Diamond Sponsor



Diamond Sponsor

